



Artist: Bianca Bolasina **School:** COOP **Title:** Right To Business

Description: A corporative octopus squishes unsuspected pufferfish to get more.... Fish? He doesn't notice, or better, he doesn't care that he is bleaching all surrounding coral.





Artist: Lillyann Bing **School:** COOP **Title:** Submerged

Description: Our lands may have been full of green and life. But as the time passes, our ocean rises. We've tried mitigating and we've tried adapting, but there's so little time. We watch as our land changes, and watch over those obvious changes. How long will it be until the ocean swallows our home? We can only hope, as we try saving our island, that we would survive.





Percy Lord
2021

Artist: Percy Lord **School:** MIHS **Title:** After RMI

Description: My painting is about what life looks like in the RMI with the impact of climate change. The most considerable impacts of climate change with the rising sea levels include losses of coastal infrastructure and land, intense cyclones and droughts, failure of subsistence crops and coastal fisheries, losses of coral reefs and mangroves, and the spread of certain diseases. Climate change also affects our cultural identity as people start to relocate. We need to stand hand in hand, to save our islands before it's too late, and we can only do this TOGETHER as a NATION.

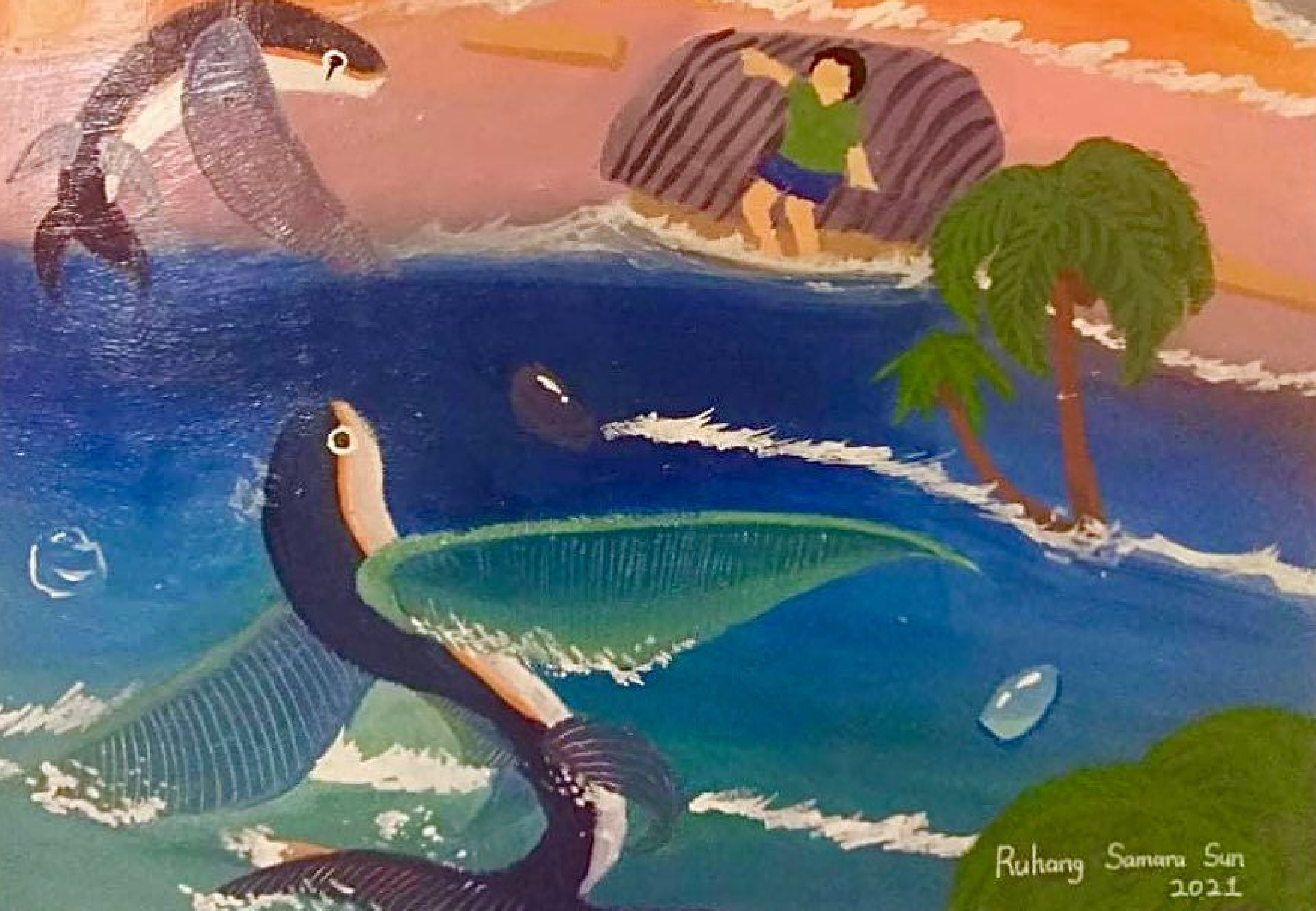




Artist: Nara Bolasina **School:** Coop **Title:** Leaving for Good

Description: My painting is trying to show how global warming comes from pollution and affects life everywhere. The flying fish represents the people in RMI and the ocean life, how they are leaving their home because of pollution and climate change. I did this by adding airplane parts to the flying fish with colors from the Marshallese flag and by doing a sad expression on it. With many shades of gray, I tried to make a smoky-looking sky for the background. Showing how polluted our sky is and how it is increasing the effects of climate change.





Ruhang Samara Sun
2021

Artist: Samara Sun **School:** MIHS **Title:** What We See

Description: In the future, a severe rain caused most lands of the Marshall Islands to be flooded overnight due to the climate change issue. People climb to their rooftops and floating objects, then they see fishes flying out of the ocean. The fishes, especially the tunas fly out because the surface of the sea is hot, shallow sea fishes have evolved wings so that they can get food from deep ocean and oxygen in the air at the same time. This painting shows that humans have to take climate change seriously so that animals, plants, and humans can all survive.





Artist: Jayson Capelle **School:** MBCA **Title:** Life To Death

Description: This painting represents coral bleaching and how it affects the Marshall Islands. Coral bleaching affects the Marshall Islands in many ways, for example, it affects our food supplies, we Marshallese rely on the sea creatures to make our meals. Coral bleaching doesn't just affect us people, it also affects the animals that are also relying on the fish. Coral bleaching is caused by global warming due to Co2 being released into the atmosphere, and trees being cut down, coral bleaching doesn't just affect us, it affects everyone and everything on this planet.





Jinghui (Joy) Huang

07.2021

Artist: Jinghui Joy Huang **School:** AHS **Title:** We Are On The Same Planet

Description: My painting is about the Bluefin Tuna, an endangered species. Because climate change, and illegal fishing make the bluefin tuna become an endangered species. There are three main species of bluefin tuna, and the species is listed as "vulnerable" on the IUCN's last Red List of threatened species. In response, environmental organizations called for human protection of tuna. The United Nations established a related holiday- World Tuna Day... and I want to do what I can, so I created this painting. Because i don't want Bluefin Tuna to be in the history books one day, even all of the endangered species. As for why we do this, our empathy for Terrestrial Biota is because we are on the same land, then our empathy for marine organisms comes from the fact that we are on the same planet. There's nothing wrong with humans taking from nature, because that's true for all species. It's just that in the case of bluefin tuna, our tiny needs are wiping species after species off the planet.





Artist: Minnie Yao **School:** Coop **Title:** Island in Time

Description: The clock cannot tell us when to leave but as the waves crash higher and higher, it washes away the people of this island and its culture in time. The Mumu, washed away and left up to dry, like the traditions and lifestyle that will be swept away at bay and left to decay if we do not do something today. Once upon a time, an island became an isle of crumbling ash and desertion as we struggle to keep the culture afloat on a home we do not call our own.





Artist: Hazel Peter **School:** Coop **Title:** Isolation

Description: In this painting I drew a man in isolation to represent Covid-19 and its causes of mental health issues, the woven basket on the painting represents our identity as Marshallese. I wanted to paint something that represents how Covid has affected us mentally through quarantine and the anxiety it has given us. And the family and friends we lost during the Pandemic.





Artist: Kiyoshi Tadashi **School:** MIHS **Title:** Colorful Meanings

Description: My painting contains very important things that we possessed. From the painting you can see a hand-shaped tree with colorful leaves attached to it, a ship, an island, stars and the sea. The tree represents us people and if you look carefully, you can see that the tree tries to reach out to the sky as much as possible, trying to avoid being drowned, representing our strength against climate change. The colorful leaves attached to the tree represent the things we have in heart. The heart-shaped leaf represents our “Iakwe Spirit”. The two blue-colored leaves and the red leaf represent blood, sweat, and tears. Hardworking lifestyle. The stars represent our culture and our heritage, where we come from.





Artist: Goodwind Jack Silk **School:** MIHS **Title:** How Breadfruit Looks Nowadays

Description: The reason I painted is because I want to show how climate change affects breadfruit. Nowadays, breadfruit is not the same compared to the past. Back then breadfruit was in good shape but now it is in different shape which is not healthy. We can see that breadfruit has also started to fall before maturing which is not the right time (when it is green). Also the leaves are dying very fast because of the temperature. The temperature is going higher, thus disrupting the breadfruit's growth.



SCALING UP PACIFIC ADAPTATION (SUPA)



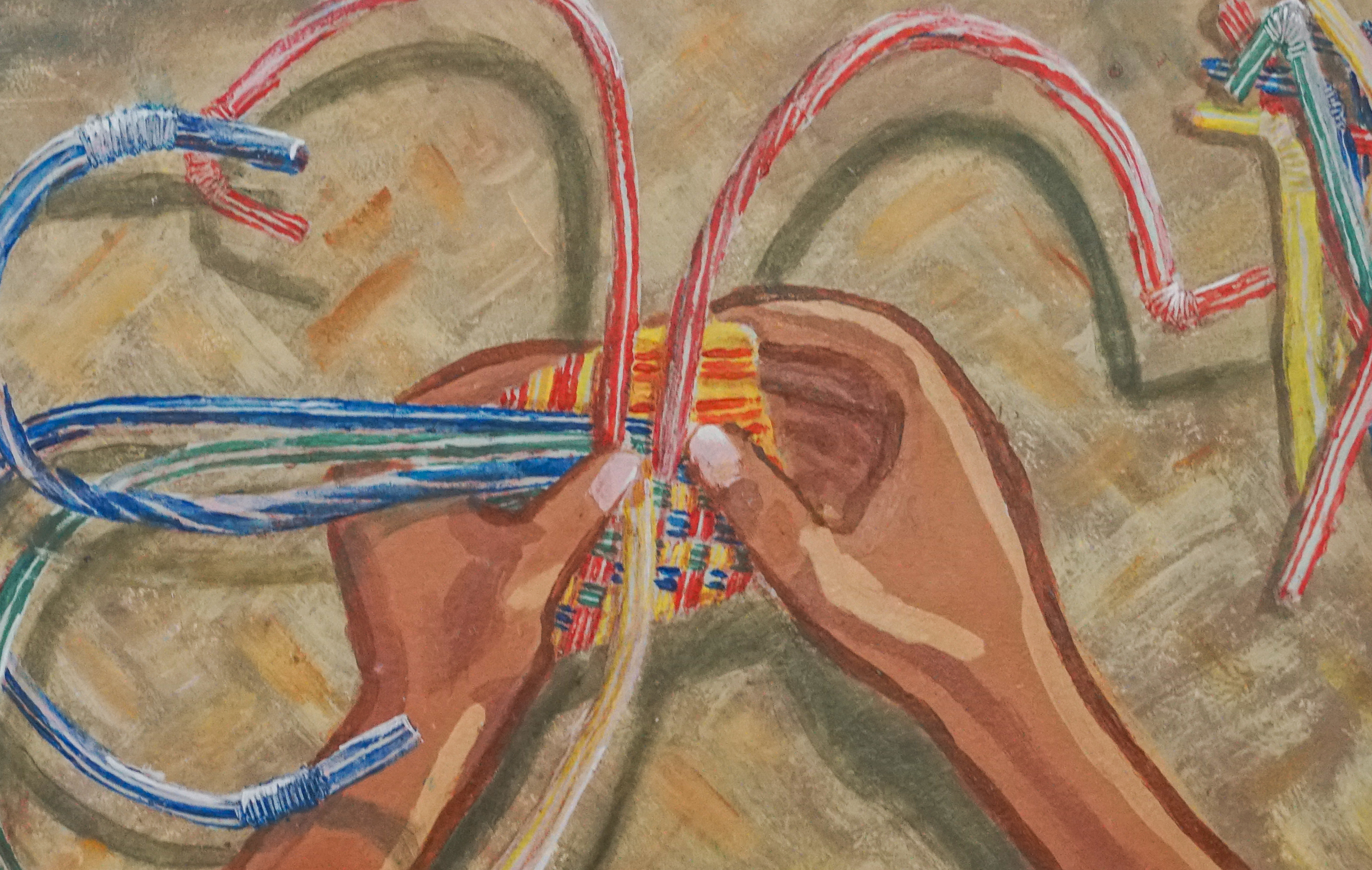


Ryback Domnick
2021

Artist: Ryback Domnick **School:** MIHS **Title:** The Cultural Escape

Description: I painted this because I wanted to remind us Marshallese how important our culture is. The canoe in this painting represents Marshallese culture and the gigantic wave behind it represents climate change. The canoe is trying to escape the wave, which indicates how most of us Marshallese run away from climate change by fleeing to the states. This is the reason why there is no sailor on the canoe.





Artist: Haruka Sato **School:** Coop **Title:** Land With No Maañ

Description: The painting visualizes our future when we have no choice left but to migrate to larger land. Although we try our best to keep the culture alive, we cannot avoid geographic difficulties that keep us from passing down the tradition. Amimono is a good example. In a foreign place, pandanus leaves are hard to find. Without the material, we cannot make the original Marshallese handicrafts. We have no choice but to use whatever object we can find to substitute the traditional maañ.





Emosi. M.
2021

Artist: Emosi Maitokana **School:** MIHS **Title:** Masi Making

Description: My painting is all about preserving our culture in the Pacific. I can imagine us islanders in different parts of the world and slowly forgetting their national heritage. As tides rise, storms become frequent, and weather changes, people have been migrating to the states and other places. This makes them slowly lose their mother tongue, and other things that link them to their national heritage. A way to preserve our culture and language is teaching the younger generation these things. This painting shows that an elder is holding the Tapa in place and also teaching the younger child the process of beating the Tapa and making it into a Masi.





Artist: Eddie Bejang **School:** MICH **Title:** The Lost Stingray

Description: I painted this because this painting represents the trash in the ocean and how it affects the marine animals in our ocean and our coral. Pollution affects our earth. Here my painting shows a stingray, who tries to find his way home, but the stingray is blinded by the amount of trash in the ocean. My painting focuses on marine life and how trash affects the ocean.

